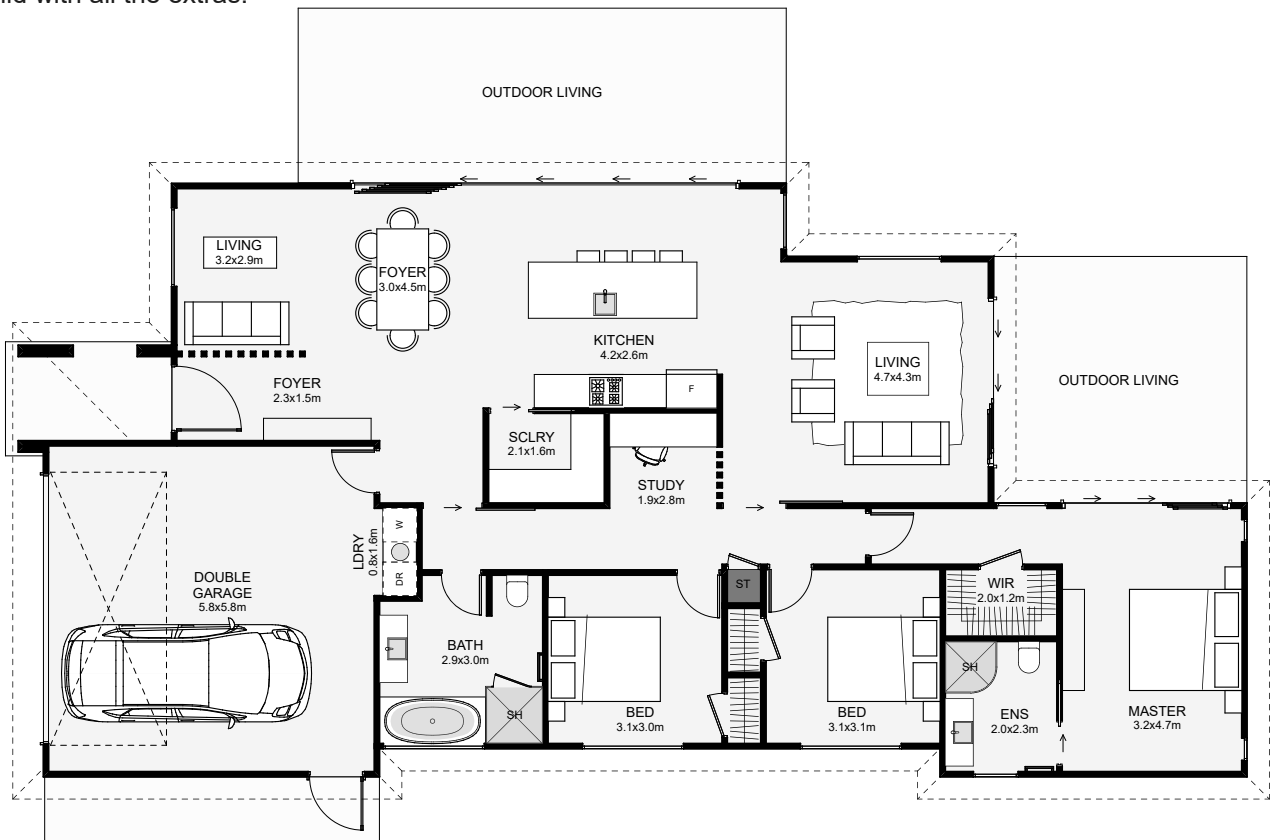




Timeless street appeal in classic weatherboard, this three bedroom home packs a lot of features! Ever wanted a nice entry? You got it! Scullery? Tick! Dual living? No problem! Study? Sure! With this home, you can be sure you're getting a nice build with all the extras!



Floor Area: 180m<sup>2</sup>

 2  
  3  
  2  
  2  
 21.9m  
 10.6m

Contact us:

Call Ian: 021 306 200

E: [ian@way2smart.co.nz](mailto:ian@way2smart.co.nz)

[www.way2smart.co.nz](http://www.way2smart.co.nz)

