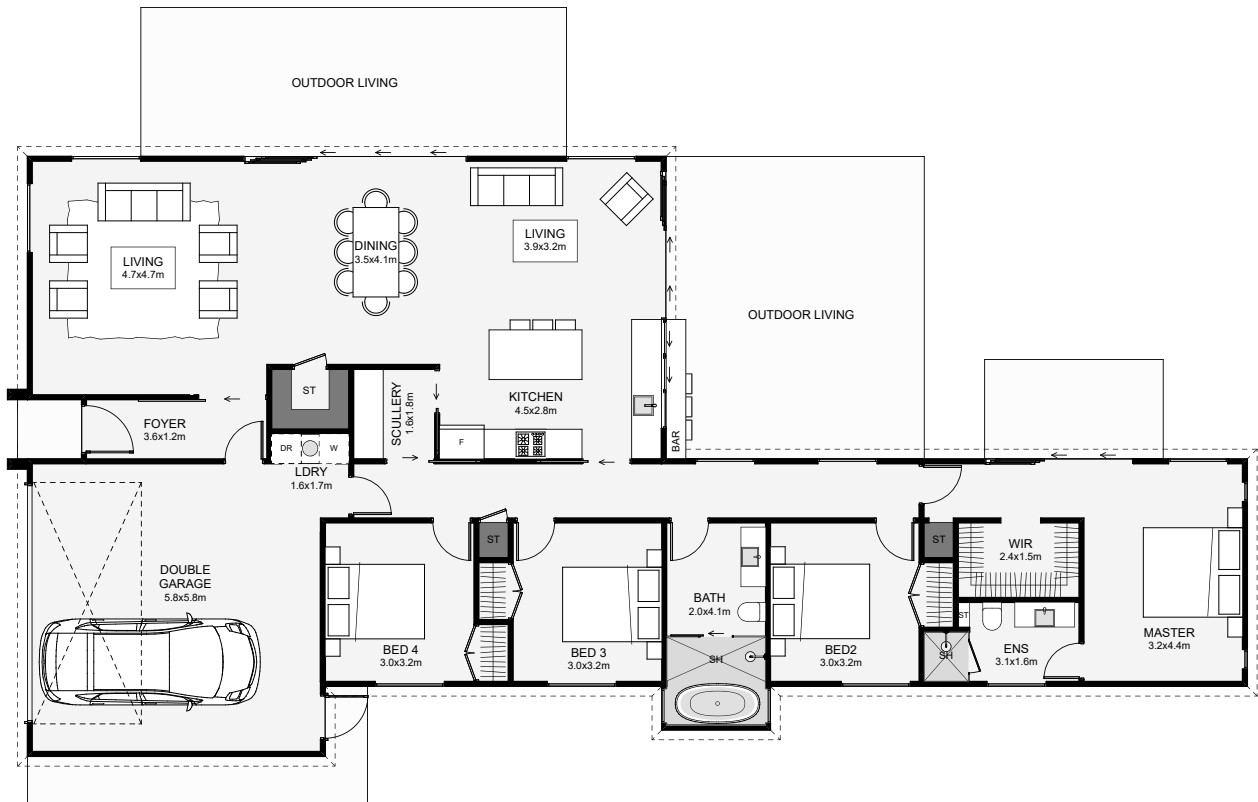




Low maintenance and modern, this home also is full of great features! Inside you will enjoy, dual living, lots of storage, a scullery, an optional outdoor bar, a modern bathroom layout and a large walk-in wardrobe. This home would be great for a family or an investment home!



Floor Area: 199m<sup>2</sup>

 2  
  4  
  2  
  2  
  25.0m  
  12.1m

Contact us:

**Call Ian:** 021 306 200

**E:** [ian@way2smart.co.nz](mailto:ian@way2smart.co.nz)

**www.**[way2smart.co.nz](http://www.way2smart.co.nz)

