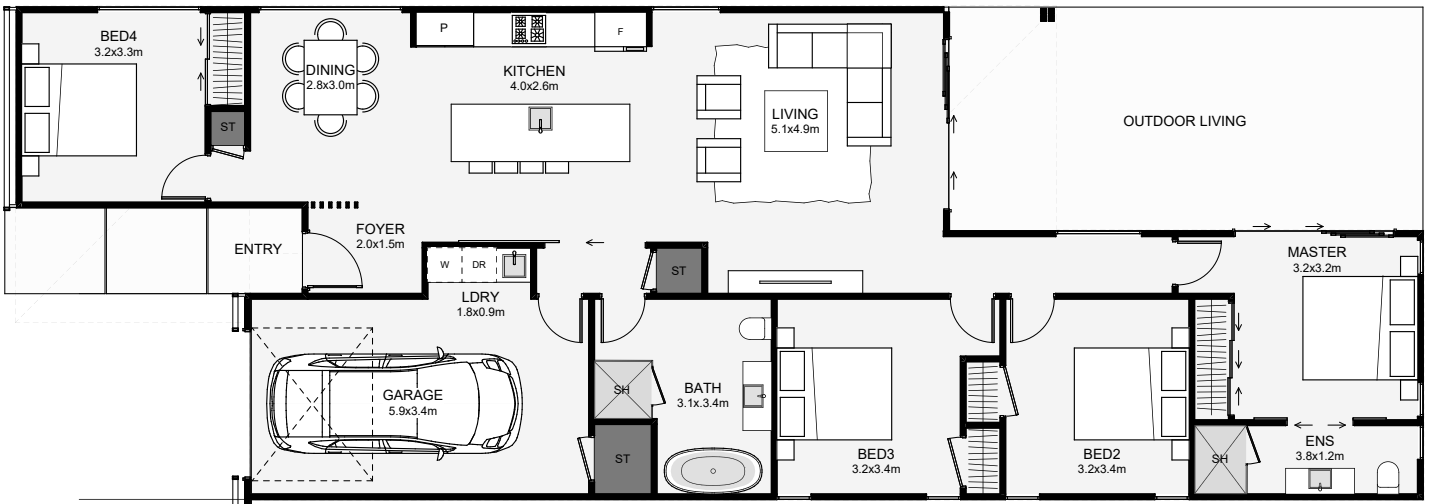




This ultra-modern home has a small footprint with four bedrooms inside. The living, kitchen and dining enjoy an open plan layout, leading to a covered outdoor space. A nice feature with this home is the fourth bedroom which is separate from the other rooms and close to the entry. This allows the extra room to be used for guests or an office. The master includes its own ensuite and access to the outdoor living. If you love that modern, sleek style, this a home that will impress both outside and in!



Floor Area: 156m<sup>2</sup>

 2  
  4  
  2  
  1  
  24.5m  
  8.7m

Contact us:

**Call Ian:** 021 306 200

**E:** [ian@way2smart.co.nz](mailto:ian@way2smart.co.nz)

**www.**[way2smart.co.nz](http://www.way2smart.co.nz)

